

APPENDIX 9.2: VIEWPOINTS



Figure 1: Map showing the location of Potential Visual Receptors

NOTE:

1: The following verified photomontages were completed by ARC Architectural Consultants Ltd.

2: The red line indicates the outline of the proposed development.



VIEW 1 – Carmenhall Road looking West

EXISTING



VIEW 1 – Carmenhall Road looking West

PROPOSED



VIEW 2 – View from Blackthorn Avenue looking Southwest

EXISTING



VIEW 3 – View from junction of Blackthorn Avenue & St Raphaela's Road looking Southwest

EXISTING



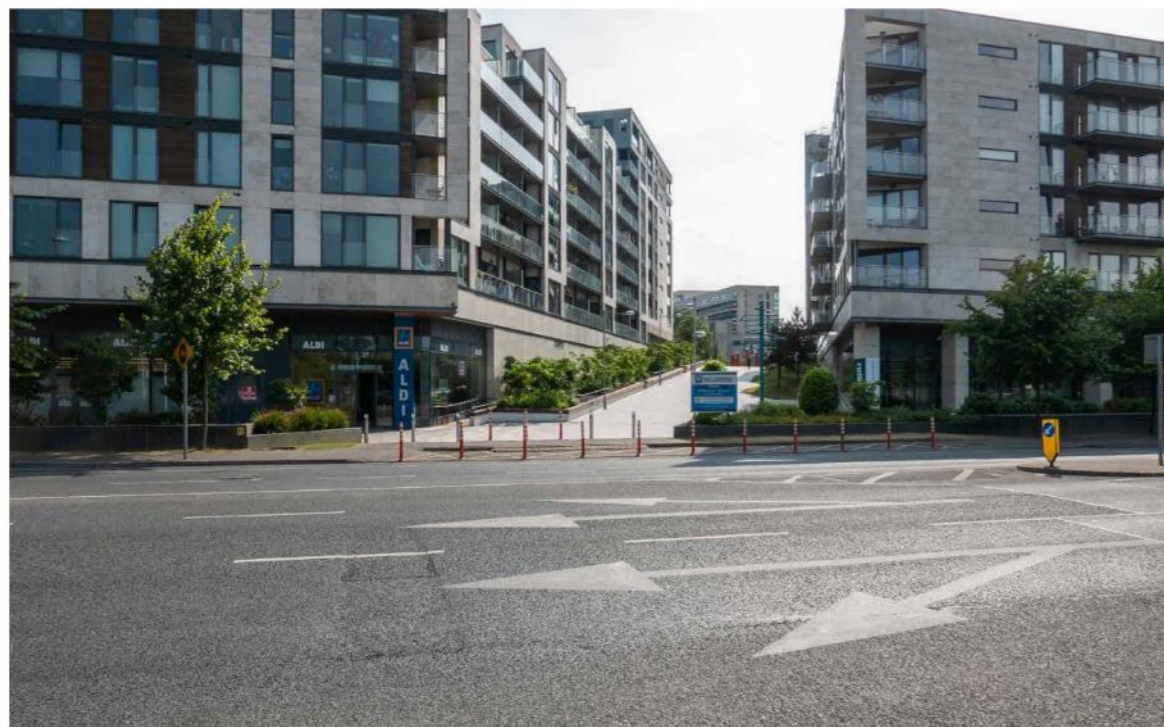
VIEW 2 – View from Blackthorn Avenue looking Southwest

PROPOSED



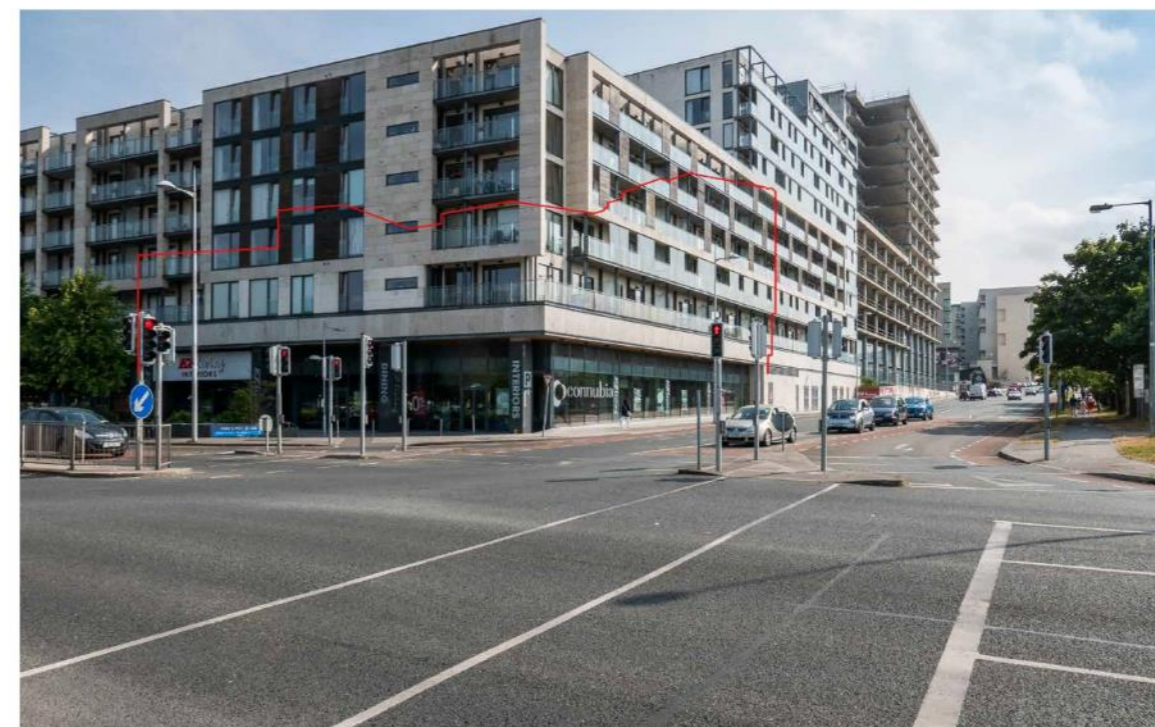
VIEW 3 – View from junction of Blackthorn Avenue & St Raphaela's Road looking Southwest

PROPOSED



VIEW 4 – View from Blackthorn Drive looking south

EXISTING



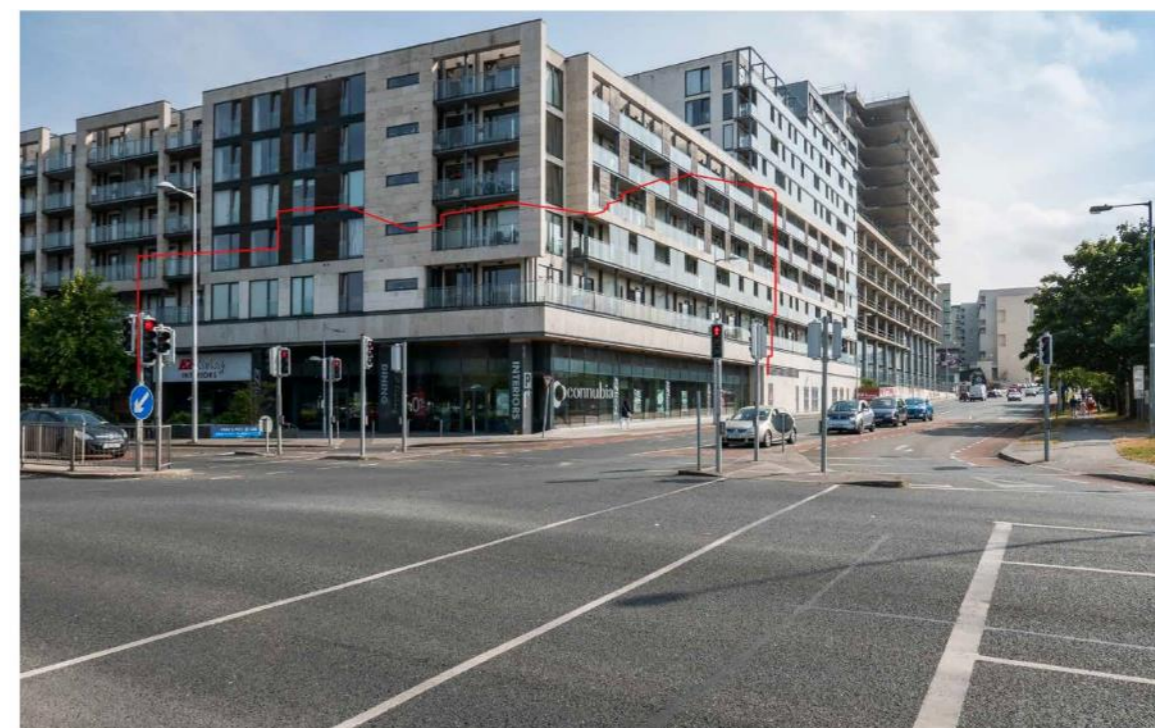
VIEW 5 – View from junction of Blackthorn Drive and Benildus Avenue looking south

EXISTING



VIEW 4 – View from Blackthorn Drive looking south

PROPOSED



VIEW 5 – View from junction of Blackthorn Drive and Benildus Avenue looking south

PROPOSED



VIEW 6 – View from Birch Avenue looking east

EXISTING



VIEW 7 – View from Blackthorn Drive looking north

EXISTING



VIEW 6 – View from Birch Avenue looking east

PROPOSED



VIEW 7 – View from Blackthorn Drive looking north

PROPOSED



View 8: View from Corrig Road looking north

EXISTING



View 9: View from Ravens Rock Road looking north

EXISTING



View 8: View from Corrig Road looking north

PROPOSED



View 9: View from Ravens Rock Road looking north

PROPOSED



View 10: View from Lakelands Close looking south

EXISTING



View 11: View from Kilmacud Road Upper at Lakelands looking southeast

EXISTING



View 10: View from Lakelands Close looking south

PROPOSED



View 11: View from Kilmacud Road Upper at Lakelands looking southeast

PROPOSED



View 12: View from Benildus Avenue looking southeast

EXISTING



View 13: View from the junction of Drummartin Link Road and Blackthorn Drive looking northeast

EXISTING



View 12: View from Benildus Avenue looking southeast

PROPOSED



View 13: View from the junction of Drummartin Link Road and Blackthorn Drive looking northeast

PROPOSED



View 14: View from Kilgobbin Road looking north

EXISTING



View 15: View from R113 Regional Road as it passes over the M50 Motorway looking north

EXISTING



View 14: View from Kilgobbin Road looking north

PROPOSED



View 15: View from R113 Regional Road as it passes over the M50 Motorway looking north

PROPOSED